

strapex

A **SIGNODE** BRAND

PRODUCTS
SERVICES
INTEGRATION
AUTOMATION



pack



bundle



unitize



warehouse



transport



STB 77 Hand tool for plastic strapping



Innovative Design

Ergonomic design with robust construction provides outstanding reliability.

Increases Productivity

Intelligent process control ensures consistent operation throughout production.

Streamlines Operation

The intuitiv graphic touch interface allows easy adjustments and indicates realtime tool status information.

Operational Versatility

Variable settings and operation modes to meet the different application requirements.

Technical datasheet

STB 77

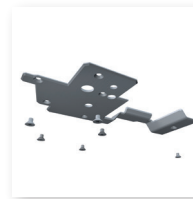


Strapping tool		STB 77
Operation mode		auto / semi / manual
Tension force range	Standard Soft	3000 – 7000 N 1000 – 5000 N
Variable tension speed range		0 – 100 mm/s (3.9 in/s)
Weight (incl. battery)		6.7 kg (14.7 lb)
Dimension (L x W x H)		416 x 157 x 158 mm (16.5" x 6.2" x 6.2")
Working temperature		-10°C to +40°C (14–04 °F)
Relative humidity		up to 90%
Sealing (joint type)		friction weld seal
Joint strength*		up to 75 – 85%
*Value depends on strap quality		
Battery / charger		
Charger type		Bosch
Battery charger voltage		100 or 110 or 230 V
Charging time		70 – 80 min
Battery type		Bosch Li-Ion ProCORE 18V, 8.0Ah
Cycles per battery charge		
■ Low tension		450
■ Medium tension		350
■ High tension		250
Strap		
Strap		PET (Polyester)
Width		25, 32 mm (1", 1¼")
Thickness		PET 0.9 – 1.3 mm (0.035 – 0.050")
Features		
Real time indication of applied tension force		●
Variable tension speed		●
Favorite strapping function		●
Display color indication for tool status information		●
Strap alignment indication		●
Strap dust blow out vent		●
Battery protection		●
0–Tension welding		●

Features



- **User interface cover**
for additional protection in harshest environment



- **Protection plate**
for usage on abrasive surfaces



- **Suspension bow**
for stationary applications

